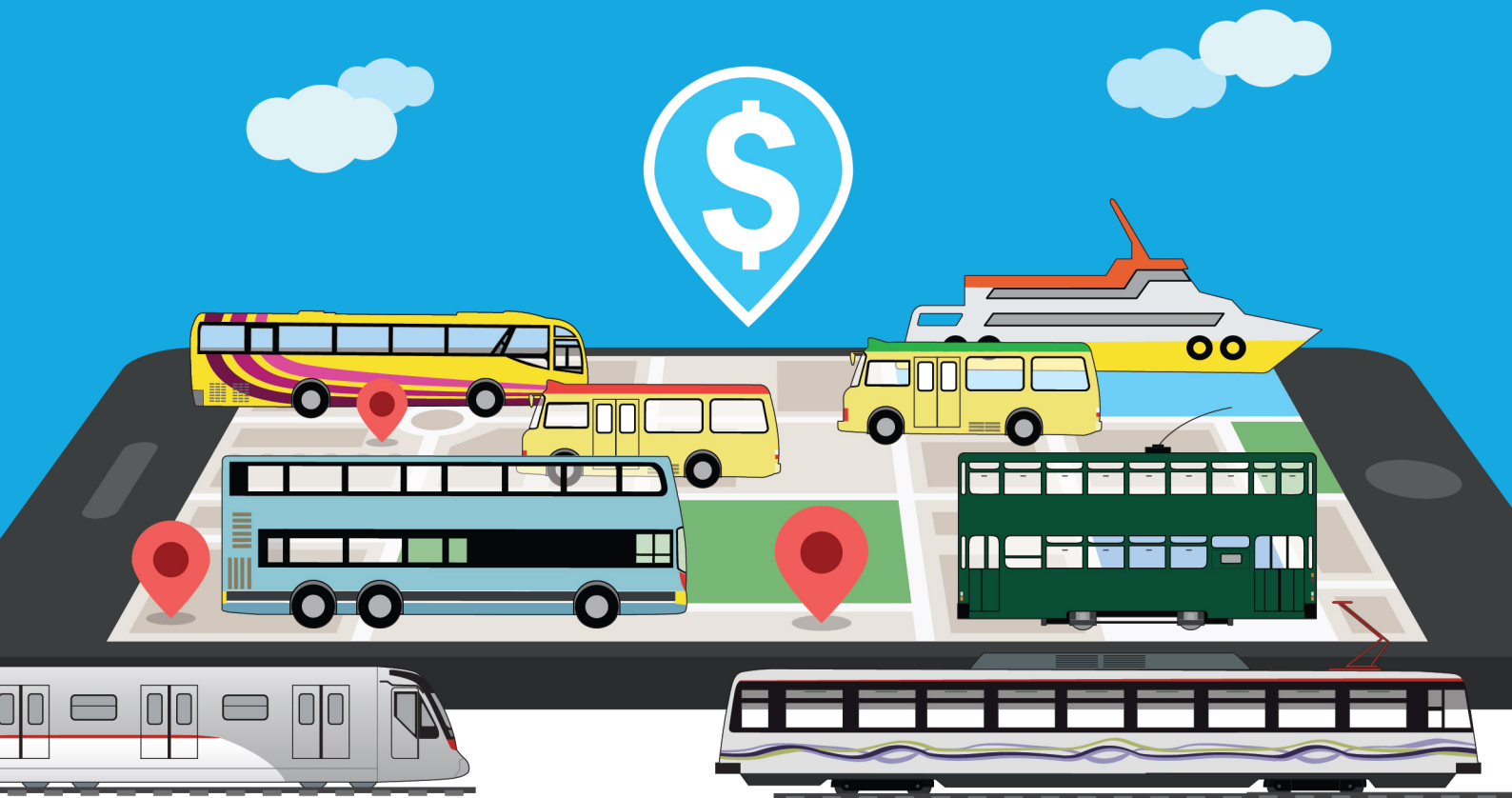


公共交通費用補貼計劃

Public Transport Fare Subsidy Scheme



2021年4月至12月期間
Between April and December

每張八達通的
每月補貼上限

由\$400提高至**\$500**

Monthly subsidy cap increased

from \$400 to **\$500**
per Octopus

每月**16日**起，
市民可領取
上一個月的補貼。
領取補貼限期為**3個月**。

From the **16th** of each month,
commuters can collect the
subsidy of the previous month.
The subsidy is valid for collection
within **3 months**.

每月公共交通
開支水平繼續
由\$400放寬

至**\$200**

Monthly threshold
continues to be relaxed
from \$400 to **\$200**

超出\$200的開支補貼比率維持於三分之一

Fare subsidy rate remains at one-third of the actual expenses in excess of \$200



詳情請瀏覽：

For more details, please visit :

ptfss.gov.hk



運輸署

Transport Department